

# Design Review (设计评价) 变更提案的实例

Model		DWG / Part No.	Name / Area	Month	Date	Year	
		4R33-6310776-A 4R33-63107A68-A	CRS MBR FRT FLR #1 and RR	Prepared	26	02	
		(THE NUMBER OF THIS PROPOSAL WAS NOT CLEAR.)			Approved	S. MIWA	
Status					Priority		

AS WELDED SURFACE BETWEEN CRS MBR AND FLOOR IS SEALED, ED PAINT CANNOT FLOW OUT.  
ADD DRAIN GAPS BETWEEN WELD SPOTS.

ADD DRAIN GAPS AT THE FLOOR'S STEP PORTION.

Proposal

TO ADD DRAIN GAP TO THE FLANGE AS MANY AS POSSIBLE. AT THE PORTION OF FLOOR STEPS. BETWEEN WELD-SPOTS.

Effect

IMPROVE ED PAINT ADHESIVE

Comment	<input checked="" type="checkbox"/> Adopted	<input type="checkbox"/> Not Adopted	<input type="checkbox"/> Pending	<input type="checkbox"/> Others
Month	Date	Year		
	26	02		
Commented	Why He			
Approved				

Model		DWG / Part No.	Name / Area	Month	Date	Year
		4R33-6342220-A	FRAME-BACK WINDOW LWR	Prepared	18	02
		5197			Approved	S. MIWA
Status					Priority	

THIS PART HAS TWO TABS WITH LOCATION HOLES FOR LOCATING BACK WINDOW GLASS. THIS SHAPE WAISTS THE MATERIAL IN BLANKING.

ITEM ENGINE

J. DAVIS

Proposal

ALT1. TO CHANGE THE LOCATING METHOD FOR GLASS TO USING A ROBOT, ETC. AND ELIMINATE THESE TABS AT ALL.

ALT2. BY CHANGING THE SHAPE, TO ENABLE THE PROGRESSIVE BLANKING AS SHOWN

IN THIS CASE, THE UPPER SIDE OF THE TRIM LINE MAY HAVE TO BE CHANGED FOR MATCHING PROGRESSIVE BLANKING. THIS SHAPE CAN BE AS IT IS FORMED. BECAUSE THIS PORTION CAN NOT BE SEEN AS IT IS COVERED BY HEADLINING.

Effect

TO SAVE MATERIAL AND REDUCE THE COST.

Comment

Adopted  Not Adopted  Pending  Others

Month

Date

Year

Commented

Approved

This locator has moved to the Roof Panel.

# Design Review (设计评价) 变更提案的实例

Engineering Proposal Sheet

No. E-0369 - ② <sup>1/3</sup>

Model	DWG / Part No.	Name / Area	Month	Date	Year
S 197	ADD NEW PARTS	CROSS MEMBER TO TOE BOARD (E-0174 is replaced by this)	7	26	02
Prepared			S. HINA		
Approved			M		
Status			Priority		

LACK OF STIFFNESS AROUND TOE BOARD.  
BOOMING NOISE MAY OCCUR.  
RESONANT IMPEDANCE SHOULD BE ABOVE 20Hz.  
(CURRENTLY GUESSED BELOW 15Hz.)

---

**Proposal**

To ADD CROSS MEMBER ON TO UNDERSIDE OF TOE BOARD PORTION.  
ALSO THE NEW CLOSED SECTION NEEDS ED PAINT VENT HOLES AND DRAINS.  
  
SEE ATTACHED.

---

**Effect**

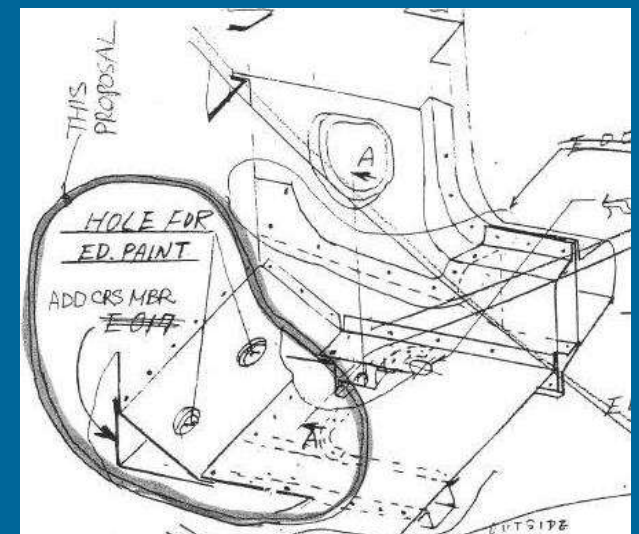
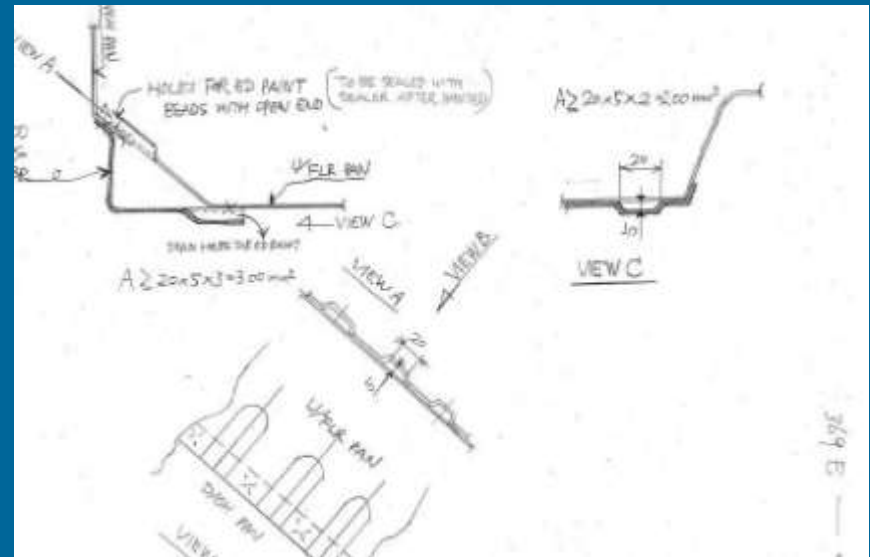
IMPROVED NOISE & VIBRATION

---

**Comment**  Adopted  Not Adopted  Pending  Others

Adding X MBR is not necessary since there are two X-MBRs on dash

Month	Date	Year
	20	02
Commented	Vignette	
Approved		



# Design Review (设计评价) 变更提案的实例

Engineering Proposal Sheet

No. E M 0494 - (E)

Model	DWG / Part No.	Name / Area	Month	Date	Year
			Sept	25	02
Prepared	4R33-6327846A/81A	PML- BODY SD OTR, FRT, R/L	S.MIWA	Approved	DR
	- 6302660A/661A	PLR- FRT BODY LWR, R/L			
	- 6320402A/402A	REINF- DR OPNG FRAME, R/L			
Status		- 6310116-A	MBR- FLS SD INR	Priority	

THE ABOVE 4 SHEET METALS MEET AT SPOT-WELD FLAGE AROUND X= 2390 ~ 2450,  
IF YOU SPOT-WELD HERE WITH 4 SHEET METALS TOGETHER, IT CAUSES UNSTABLE WELD STRENGTH.

ITEM	ENGINEER
	S. Frank

**PROPOSAL** ALT1. To SPOT-WELD HERE FOR EACH TWO SHEETS INSTEAD OF WELDING WITH FOUR SHEETS TOGETHER AROUND X=2390 ~ 2450.  
ALT2. TO CUT THE FLANGE OF PLR- FRT BODY LWR (4R33-6302660A/661A)

**Proposal**

**Effect**

**Comment**  Adopted  Not Adopted  Pending  Others

Rocke Reinf was notched to remove 4T

Month: 10, Date: 15, Year: 02

Commented: [Signature]

Approved: [Signature]

Engineering Proposal Sheet

No. E M0493 (E)

Model	DWG / Part No.	Name / Area	Month	Date	Year
			OCT	01	02
Prepared	S-197 4R33-6302516-A	PLR- FRT BODY LWR OTR	S.MIWA	Approved	DR
	- 6327846-A	PANEL- BODY SIDE OTR, R/L			
	- 6324312-A	PLR- CTR BODY INR			
Status		- 6350202-A	PANEL- ROOF	Priority	

THE ABOVE 4 SHEET METALS ARE SPOT-WELDED WITH 4 SHEETS AT ONCE (X= 3416 ~ 3468)  
THIS CAUSE UNSTABLE WELD STRENGTH.  
SEE THE SECTION BELOW.

ITEM	ENGINEER
	W. MAZUR

**Proposal**

**Effect**

TO MAKE WELD STRENGTH STABLE

**Comment**  Adopted  Not Adopted  Pending  Others

Month: , Date: , Year:

Commented:

Approved: